



Auckland Climber

Meetings are held on the first Monday of each month – exceptions will be published

Meetings are usually held at St Lukes Community Centre, 130 Remuera Rd, Newmarket, beginning at 7.30 with drinks and nibbles provided afterwards.

A gold coin donation for food and refreshments is appreciated.

*This months meeting: **Monday July 7***

Dave Crofts - Making Reality TV on Everest

Dave spent two months in Tibet on the north side of mount Everest as a 'climbing engineer'. He was part of a team of forty people making a outdoor reality TV programme for an American network. Every expedition has an "angle" to help finance the huge costs of an Everest climb.

*Next months meeting: **Monday August 4***

Nick Monteith - Sailing to the Antarctic Peninsula

A ski-touring and mountaineering adventure

Important Avalanche Transceiver Information

Climbers, skiers, and other transceiver users may not be aware that the batteries they choose to use in avalanche transceivers can have a big effect on the performance of the transceiver. This can range from emitting a weak signal, to no signal at all. Given the potentially life-saving value of transceivers, this is obviously something that should be of concern.

Marvelox (NZ distributor of Ortovox avalanche transceivers) advise that transceiver manufacturers recommend using only high quality alkaline batteries in transceivers. Alkaline batteries provide the best battery life and voltage supply for the particular power requirements of transceivers. Some people may already use lithium batteries in headtorches for their performance in cold temperatures, however for transceiver use alkaline batteries last just as long. They are also much cheaper! Rechargeable batteries should not be used, as their range and working life can be significantly shorter. This is because they output a lower voltage, and have problems operating in cold temperatures.

Marvelox also strongly recommend that people use only 'name-brand' alkaline batteries. Cheaper imported batteries (and non-alkaline versions of some name-brand batteries) can be quite significantly shorter in length than others. For example, Duracell AA batteries are 50.4mm long, and Energizer's 50.5mm, while some Asian batteries are only 49.1mm, with some down to below 47mm. This can potentially result in a bad, or nonexistent connection with the transceiver contacts, which results in a voltage drop. Also, cheaper batteries can perform poorly in 'low drain' devices, which includes transceivers.

Of course, the standard considerations for transceiver use still apply. Batteries should be removed when the transceiver is not in use for a period of time, as battery leakage can cause damage. New batteries should be inserted for the winter and the battery strength checked regularly, changing the batteries when the signal gets low. Also, the battery and transceiver contacts should be cleaned to prevent surface corrosion, which contributes to reduced voltage supply and hence performance.

So if your transceiver seems to be playing up, in the first instance you should check your batteries and make sure they are new, name-brand alkalines.

New Taranaki Guidebook

The new edition of the Taranaki guidebook will hopefully be printed some time in July and should be appearing soon.

Interested in getting into Canyoning?

CanyonZ is offering special training course for NZAC members.

Introductory level

Basic knots and anchors, Basic rigging, Specific canyoning gear, Safety and risk management, Contingency anchors, Abseiling techniques - and much more!

One day. Cost \$50 p.p., minimum 10 people. Gear provided. No actual canyoning involved.

Advanced level

Natural and artificial anchors, Advanced rigging and anchors, Sequencing, Guided abseils, Ascending and conversions, Multipitch rigging, Swiftwater - and a whole lot more!

2 days, including one of canyoning. People should have their own gear. However gear can be loaned if necessary. Ropes provided for the canyoning trip. Cost \$90, minimum 10 people.

We are looking to finalise a date for these courses (Sometime in the next three months), so please contact Mike Henton with your preferred dates, if you are interested in these courses.

New Zealand Alpine Journal 2003

Contributions sought...

Yup — it's that time of the year again; time to put pen to paper, fingers to keyboard and start sorting out those slides.

The NZ Alpine Journal is the Club's premiere publication; a record, a source for research and a forum for reflection, and we want *your* words and photos.

Principally we seek reports of this year's most note-worthy climbs (either new climbs or repeats), articles or essays from any aspect of the greater sphere of climbing, local area reports, and yes... obituaries.

As always photographs and artwork are welcomed.

If you have an idea you wish to discuss or any questions, or a submission, don't hesitate to contact the editor:

Mark Watson – NZAJ Editor
(day) 03 377 7595, (eve) 03 942 3312
editor@alpineclub.org.nz
PO Box 786, Christchurch.

CLOSING DATE 1st SEPT

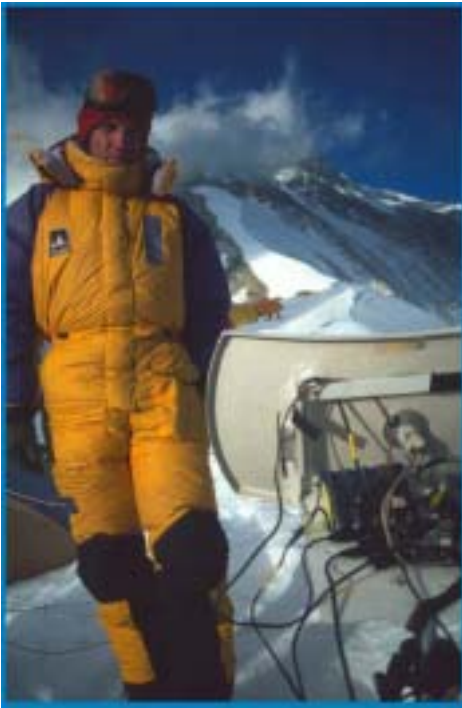
Ruapehu Hut Upgrades

The good work continues at the hut under the direction and efforts of Suresh Nanu. The recent installation of new reinforcing mesh grids in the drying room mean more space to hang gear, and a gap from the wall means it will get dry faster too.

Trip Reports

Solstice Weekend

Fifteen brave souls (give or take a few) managed to congregate for the Solstice festivities at the Ruapehu hut on the weekend of the 21/22 June. There was enough snow to provide good sport outside the hut, & enough food, wine, telephone directories, tables, benches & red chairs to provide good sport inside. Outside trips included the Pinnacles, Te Heuheu, Dome Shelter & Tahurangi; inside activities included table traversing both circumferentially & longitudinally, bench traversing, red chair stomach orbiting (the record currently stands at four) and telephone book balancing (the official record is marked on a stick under the window bench, a nominal 12 books (Auckland White Pages 2002)). Considering the range & intensity of the activities, a lot of maintenance & improvements were carried out also. The weather was great & a lot of fun was had, thanks to Catherine & Dave, Chris & Erena, Chris, Sean, Carl & Coco, Brian, Suresh, Tim, Eric, Matt & Anne who made it such a success - John Salisbury



Dave Crofts at work, North Col, Mount Everest.



Solstice party – Alpine Instruction?



Solstice party - Dave at play?

Trips

July 19/20 - Instructors weekend

August 2/3 - Snow craft course I

August 9/10 – Mangetepopo Lodge (Ascent of Ngauruhoe and Tongariro)
Skill level Beginner – you need to be able to use crampons and know how to self arrest to go on this trip.

Stay at National Park Backpackers on Friday night, get lift and walk out to Mangetepopo Hut on Saturday morning, climb either Ngauruhoe or Tongariro on Saturday depending on group sizes, walk back to Whakapapa on Sunday.
Kathleen Lee (tel: 630 6265, kathleen.lee@airnz.co.nz)

August 16/17 – Te Heu Heu Ridge – Ice Climbing
Skill level Intermediate – must have attended snowcraft courses I, II and III

Stay at Ruapehu NZAC hut on Friday, Saturday night. Walk up to Te Heu Heu Ridge during day and climb there.
Mark Roberts (tel: 630 6265, mark_roberts26@hotmail.com)

August 22/23/24 – Avalanche awareness course
Tim Swain (Home 482 2275, Cell 025 604 0933) email - tswain@ihug.co.nz

August 30/31 - Snow craft course II

September 6/7 – Turangi/Girdle Stone from Turoa – based in Ohakune
Skill level Intermediate – must have attended snowcraft courses I, II and III.
Confidence in negotiating steep snow slopes is a must!

Based in Ohakune, climb Tuhurangi and Girdle Stone on Saturday.
Kathleen Lee (Tel: 630 6265, kathleen.lee@airnz.co.nz)

September 13/14 – Ski Touring - traverse to Whangaehu Hut from NZAC Hut
Skill level – intermediate – must have attended snowcraft courses I, II and III.
Chris Leigh (Tel: 846 8898, chris.l@kmg.co.nz)

September 20/21 - Snow craft course III

September 27/28 - Taranaki via Syme's Hut and Ridge
Carol Diamond (09 523 3590, carold@nfo.co.nz)

October 4/5 - Ruapehu NZAC Hut – intermediate snow craft refresher
John Boon (jboon@unitec.ac.nz. 021 616 416)

October 25/26/27 - Labour Day – Taranaki
Deryn Williams (527-7689, deryn@hyper.net.nz)

Look out in the Climber for more details of each trip.

General queries/questions about each trip can be made to Kathleen Lee

If you have any ideas of trips which the Auckland NZAC could organise, or would like to organise a trip yourself then contact please Kathleen to discuss this further. Ideas for trips to run in November, December and January would be gratefully received.

Snowcraft Instructors

Come and share your knowledge with like minded individuals starting out in the mountains. If you would like to instruct on this years snowcraft course please contact Mike Henton on 027 4677 050 or mike@clmnz.co.nz

Snow Craft Course Dates

This years snow craft course is currently full.

Theory nights are in the week prior to each weekend.

19/20 July	Instructors Weekend	2/3 August	Weekend 1
30/31 August	Weekend 2	20/21 September	Weekend 2

Climbing partner needed

Arrive Queenstown Sunday 28th September - Depart Queenstown Sunday 12th October

Looking to climb Mt Aspiring with a partner NW Ridge (share cost of fly in to Bevan Col, walk out) or looking for a climbing partner to join me on a 7day Aspiring Guides climbing experience, being guided up Mt Aspiring SE ridge and other climbs over the 7days.

I'm 49yrs and involved in climbing since 2000. Have done some training winter 2000 Snowy Mountains and out of Kelman Hut 2001. December 2002 walk in and walk out from Colin Todd hut with two friends, poor weather prevented an attempt on Mt Aspiring.
Contact - e-mail: raykennedy@bigpond.com

Climbing partner wanted for Nepal this November.

Aim to climb "non-technical" trekking peak(s) - possible objectives of Mera, Island Peak, Naya Kanga, or Tharpu Chuli, combined with a remote area trek. Some alpine climbing experience necessary. Please call Darren, on (09)478-6991, 021-180-1114, or email d.hooks@auckland.ac.nz

Gear for sale

Set of snow chains, good condition, phone for tyre sizes, John Salisbury 834 6699

Mountain Hardwear 4 season, water resistant, mummy design s/bag RRP\$700, only \$450. Macpac Torre 85L climbing/tramping pack \$225 Macpac windproof fleece, Med \$75 Ph Nick - 09-6390963 (Hm) 09-5292298 (Wk)

Climber Content

Deadline for each issue is the 20th of the month preceeding. Send any content for the climber to Chris Leigh. chris.l@kmg.co.nz. PO Box 11333, Ellerslie.

Send any photos for inclusion as a jpeg or tiff image, 300dpi at print size (up to 200mmx150mm/8"x6")

Change of Address

For any change of address, email your new details to NZAC headquarters. subscriptions@alpineclub.org.nz

adapting to your environment



KMG are proud to support the Auckland Climber by producing this newsletter. For a complete solution for your Design, Print, Internet and Email Marketing needs

Contact Chris Leigh. p. 09 622 8446

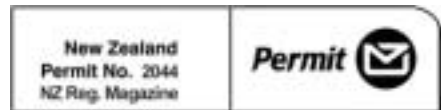
f. 09 636 4997 – m. 021 333 457

e. chris.l@kmg.co.nz - www.kmg.co.nz

COMMITTEE CONTACT INFORMATION

Mark Roberts Chairperson	630 6265	mark_roberts26@hotmail.com
Maurits van den Berg Secretary	521 4147	maurits.vandenberg@staplesrodway.com
Tristan Harrison Treasurer	377 1773	tristanh@xtra.co.nz
John Salisbury Membership	834 6699	Salisj@xtra.co.nz
Kathleen Lee Trips	630 6265	Kathleen.Lee@airnz.co.nz
Dave Crofts Instruction Manager	820 2248	dave.crofts@aut.ac.nz
Mike Henton Instruction	625 7440	mike.henton@clmnz.co.nz
Sarah Duncan Meetings	638 9500	sarahfromnz@hotmail.com
Geoff Bradly Ruapehu Hut Maintenance		Geoffrey.Bradly@police.govt.nz
Derryn Photo Competition Organiser	527 7689	deryn@hyper.net.nz
Suresh Nanu Ruapehu Hut Bookings	021 815 210	ruapehuhut@paradise.net.nz
Chris Leigh Publications	846 8898	chris.l@kmg.co.nz

New Zealand Alpine Club
Auckland Section
PO Box 3036, Auckland



The Auckland Climber - NZ Alpine Club Auckland Section Newsletter



NZAC Photographic Competition 2003

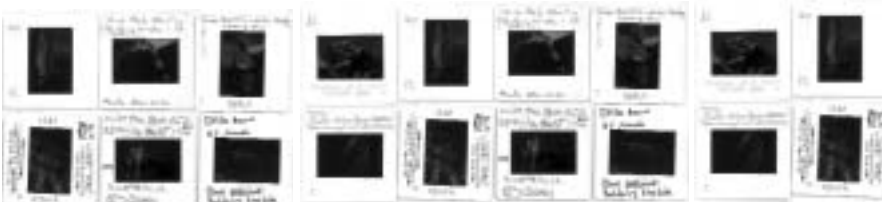
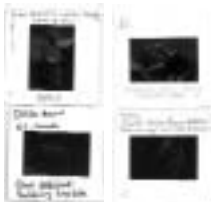
Slides and mounted prints.

Over \$3,000 in prizes of Marmot outdoor gear.



Marmot
FOR LIFE

Prizes generously donated by Marmot



Entries close July 31, 2003.

- Each competitor may enter not more than three prints or slides in each category.
- Refer to the NZAC website <www.alpineclub.org.nz> for the rules of the Photographic Competition
- Entries should be identified by the following information: 1) Name, address & section, 2) Title, 3) Category.
- Slides should be marked with a spot in the lower left-hand corner when held for viewing.
- Send your entries to: NZAC Photographic Competition, c/o NZAC Auckland Section, PO Box 3036, Auckland

Categories

ALPINE GENERAL

Photographs in an obvious alpine setting, where an activity is not the major feature, including mountain landscapes, portraits, abstract studies, and subjects not covered by other categories.

ALPINE ACTIVITY

Photographs where the activity is a major feature, including mountaineering, alpine skiing, bivouacs.

ALPINE NATURE

Photographs of natural features in the alpine environment, where the emphasis is on artistic rendition. Geological features, plants or parts of plants, birds, animals, water, snow and ice formations are suitable subjects.

ROCK CLIMBING

Photographs relating to rock climbing. They should have strong visual impact and good composition.

PHOTOJOURNALISM

Photographs that record an event relevant to climbing. Judged on how well it tells a story rather than its artistic composition. Examples are rescues, natural disasters, instruction, or climbing competitions.

MOUNTAIN HUMOUR

Humorous photographs relating to climbing or the alpine environment.



Note: Entries should be appropriately packaged for sending by mail. Prints should be A4 size and carefully mounted. We will take the utmost care of your slides and prints, and return them as soon as possible. If your original slides are needed during the competition period, high quality duplicates are an option for submission or your own use. Prints or transparencies from digital photos will be accepted, provided that any digital manipulation of the photo is minimal and acknowledged.

A selection of the winning photographs will be published in The Climber and the NZ Alpine Journal and a set of duplicates made and sent between Sections. Otherwise, copyright remains with the photographer.

Prizes have been generously donated by Marmot and Allsport Distribution Ltd. Champions in each category will receive their choice of one of the following: Marmot PreCip Jacket, Marmot Dr!Climb Windshirt, Marmot Elger or Diva Pack. Each item is valued between \$279

and \$299, and is available in mens or womens styles. Several trophies have been presented for this competition over the years, and will also be awarded to the respective champions.

Honours and Acceptance winners will receive a Marmot cap (either Marmot PreCip or Twill cap), and all entrants gaining Acceptance or better will receive a Marmot Nalgene drink bottle or Marmot thermal mug.

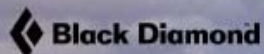
For more information on Marmot, visit: www.allsportgear.co.nz



ARC'TERYX



icebreaker
NATURE CLOTHING



Black Diamond



Beal



New Zealand Alpine Club Inc.

Founded 1891

Bulk Gear Buy

25% Off All Climbing Gear

20% Off Everything Else In Store

Discounts are off Recommended Retail Price Only, Does Not Apply To Items Already Discounted.

Wednesday 23rd July

bivouac / outdoor

COMMITTED TO ADVENTURE

300 Broadway, Newmarket, 529 2298 - 109 Queen St, Auckland City, 366 1966 - Westfield St Lukes, St Lukes, 845 8315