

Possible Future Club Hut Projects

Hooker Hut

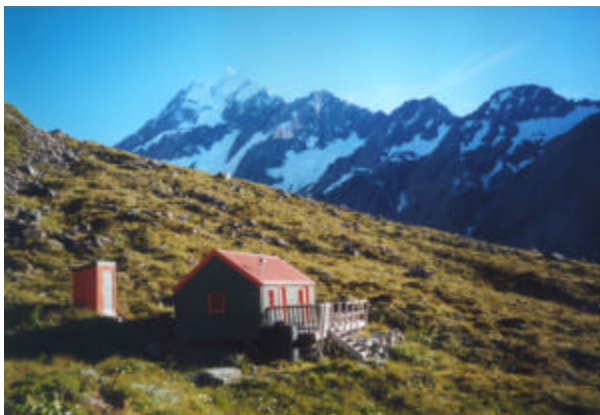
Project: Relocation of existing hut

Cost: \$0 - \$30,000

Timeframe: One season

Use: 800 – 1200 nights

Partners: DoC Mt Cook for management of the hut, Alpine Recreation for funds for relocation.

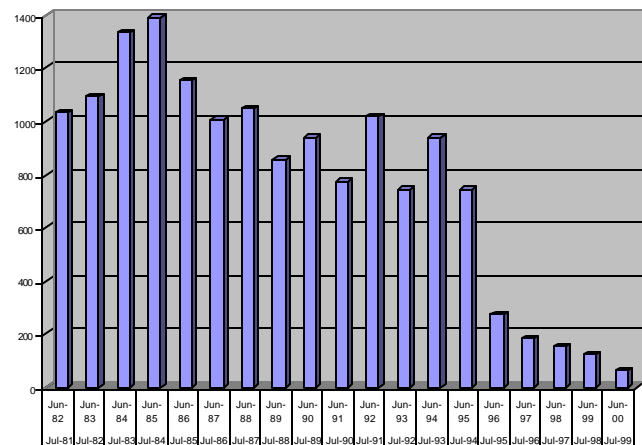


For: An opportunity to take over a medium to high use hut that is well used by a wide range of people, possibly at zero cost.

Against: Not a technical climbing base hut, could be used more by overnight trampers and tourists. Yet another club hut. There are also three options for the relocation of the hut.

Gottlieb Braun-Elwert has pledged \$30,000 from his company Alpine Recreation for the relocation of Hooker Hut which currently cut off from use by eroded glacier moraine. The issue is now out for public consultation as part of the Mt Cook National Park Management Plan. The club could look to be involved with the project as part of a DoC management agreement. The hut was receiving a large amount of use before access issues became a problem. There are still options for the actual new site of the hut.

Hooker Hut Usage Figures 1982 - 2000



Possible Future Club Hut Projects

Beetham Hut

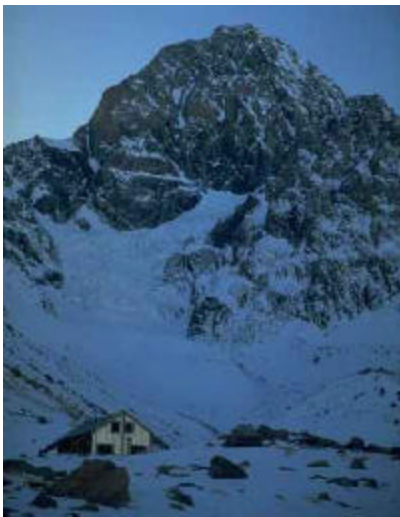
Project: New hut

Cost: \$100,000 - \$200,000

Timeframe: One season

Use: 800 – 1200 nights

Partners: DoC Mt Cook for management of the hut

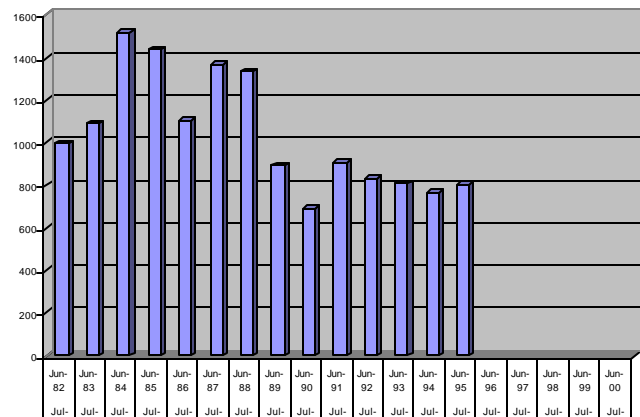


For: An excellent climbing hut for the whole of the Malte Burn Range and therefore a very worthy addition to the Club hut network. Doc are unlikely to replace it on their own.

Against: There would be a need for an avalanche free site. Expense and hassle of another club hut.

Beetham Hut was destroyed by an avalanche in 1995 and is not expected to be rebuilt by DoC. A new location would have to be found for the hut but the Mt Cook management plan still sees the area as a 'hut site'. With the level of use that the hut was receiving, a new Beetham Hut could be seen as a corner stone of a future DoC Mt Cook huts management agreement.

Beetham Hut Usage Figures 1982 - 2000



Wye Creek Hut

Project: New hut location

Cost: \$100,000 - \$150,000

Timeframe: One season

Use: unknown

Partners: Aspiring Guides Limited, DoC for management of the hut



For: This is an excellent area in summer from general tramping and scrambling in the hills, and in winter it is now receiving a lot of use for ice climbing.

Against: A new hut in a new area with the added burden for the club of another hut, unknown usage figures due to being a completely new area. Hut fee collection.

Private interests are now looking at the placing of a hut in this high use area. Access to the area is very good due to its close proximity to Queenstown. With guided and public groups in the area the place could become a very well known destination.

Usage Figures Unknown

Possible Future Club Hut Projects

Unwin Lodge

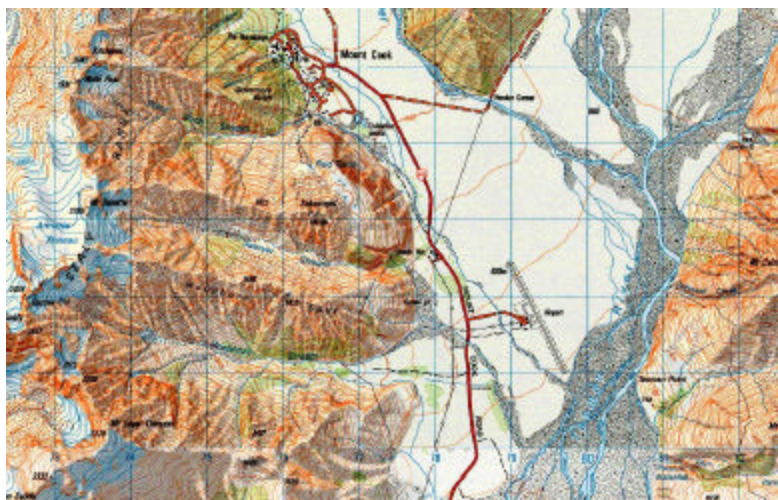
Project: Hut upgrade

Cost: \$30,000 - \$100,000

Timeframe: One to four years

Use: \$36,000 worth per year

Partners: South Canterbury Section and Unwin Hut Wardens.



For: This hut provides the bulk of the income the club receives from accommodation and should receive as much money as it requires. The maintenance has been run down and it is seen as the Club base.

Against: The maintenance of the hut will be an ongoing concern and needs to be planned over several years.

Currently there are potentially major issues with the water supply, toilet and shower facilities and the waste and sewage system. In past summers the lodge has been on the brink of closure due to water supply failure. All of these areas require improvement and upgrading. The showers are out dated and unsuited to the profitable school group market. The general look of the hut has been complained about in the past but a recent survey has shown general acceptance of the huts condition, layout and facilities. Recent meeting have put in place a work plan for the hut.

Usage Figures Unknown

Possible Future Club Hut Projects

Homer Hut

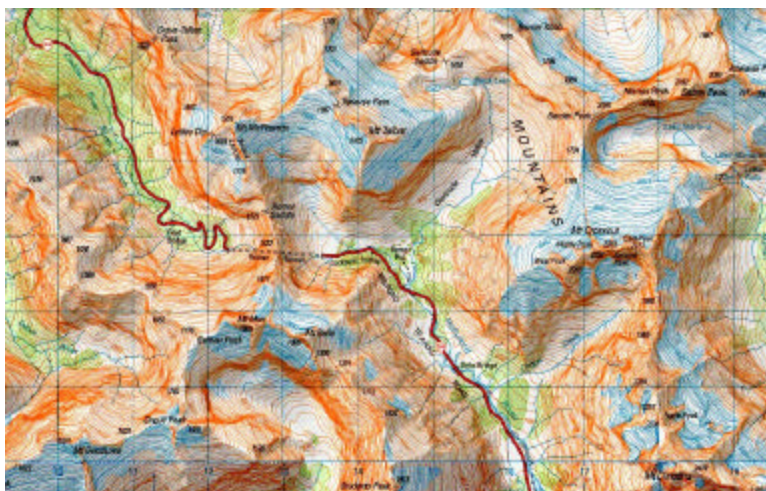
Project: Hut upgrade

Cost: \$20,000 - \$80,000

Timeframe: One to four years

Use: unknown

Partners: Southland Section



For: The hut is an important climbing base in the Darren's area and is in need of a general tidy up with the provision for a warden to enable better fee compliance.

Against: The maintenance of the hut will be an ongoing concern and needs to be planned over several years. Very poor hut fee collection history.

Homer Hut has had various changes and modifications over the years and is now looking a little tired and run down. There is a need for something to be done to tie it all together and improve the look and feel of the hut. The wardens room is not inviting and a warden in summer has proved its worth in the past. The hut receives low use during the winter. Southland Section have produced a report on one option which includes the building of a separate wardens quarters.

Usage Figures Unknown

Possible Future Club Hut Projects

Ball Hut

Project: Replacement or relocation of existing hut

Cost: \$100,000 - \$150,000

Timeframe: One season

Use: 200 – 300 nights

Partners: DoC Mt Cook for management of the hut

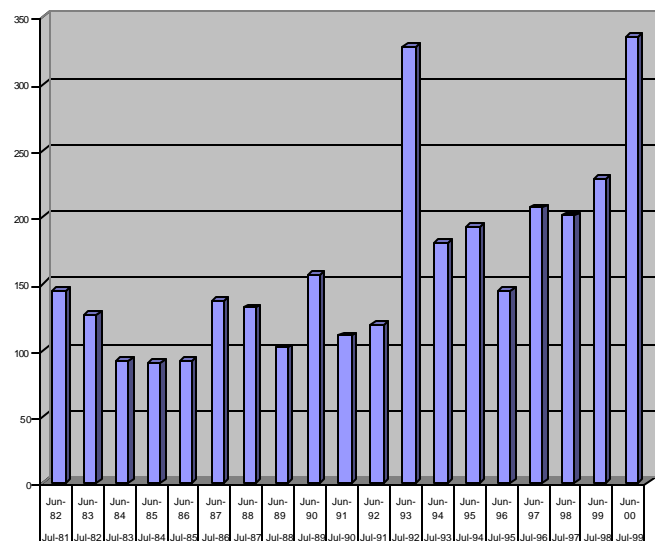


For: Could provide a good solid base for ski touring, climbing and tramping as part of a Mt Cook network of huts.

Against: Main use may be by trampers crossing Ball Pass and DoC may have funds already.

Ball Shelter is located at the end of the old Ball Road that is slowly falling into the Tasman Glacier lake. The walk down the road is becoming longer and therefore the hut is receiving increased use. The Ball Pass crossing, Plateau Hut, and the Tasman Glacier are the main locations of embarking or returning parties. The hut will become unsafe as erosion of the moraine wall continues and the hut will need relocation or replacement.

Ball Shelter Usage 1982 - 2000



Possible Future Club Hut Projects

Brewster Hut

Project: Replacement of existing bivvy

Cost: \$100,000 - \$150,000

Timeframe: one season

Use: unknown

Partners: DoC Mt Cook for management of the hut along with Esquilant and Wye Creek.



For: A beautiful area that would receive increased use if there was a good base to climb from.

Against: There is a bivvy at the site already which serves the purpose. Total unknown use and hut fee collection problems.

This beautiful location below Mt Brewster provides a base for climbing and tramping in the region and could be a very popular area in the future. Currently there is a very small two bunk bivvy at the site that could be replaced with a larger hut in the region of 12 to 20 bunks. Guided groups would possibly make use of such a facility.

Usage Figures Unknown

Possible Future Club Hut Projects

Plateau Hut

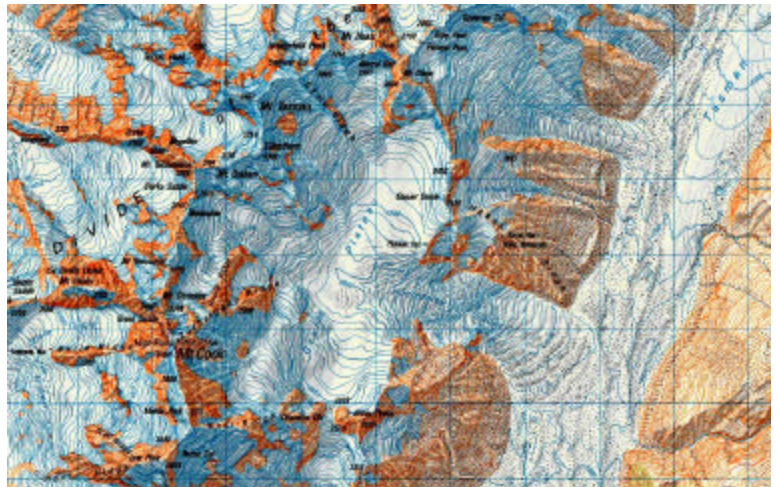
Project: Complete hut replacement

Cost: \$150,000 - \$250,000

Timeframe: one season

Use: 1000 – 1300 nights

Partners: DoC Mt Cook for management of the hut



For: This could be classed as the foremost climbing hut in New Zealand and therefore if available it would be an excellent addition to the clubs hut network.

Against: Funding may already be available from DoC via the government.

This hut is due for replacement in a few years time and DoC has signaled that funding may be available for the project. As a prominent hut to serve as a backbone for a Mt Cook management agreement this hut would be excellent. It could provide benefits to the club including increased profile and membership.

Plateau Hut Usage 1982 - 2000

