



The South Canterbury Climber

August 2017

ALPINE TRIPS
ROCK CLIMBING TRIPS
NZAC NEWS

Ski Mountaineering Scholarship

Details inside...

Welcome to the **August edition** of the NZAC South Canterbury Section's newsletter. The section runs a variety of alpine, climbing and other trips and courses throughout the year and new members are always welcome.

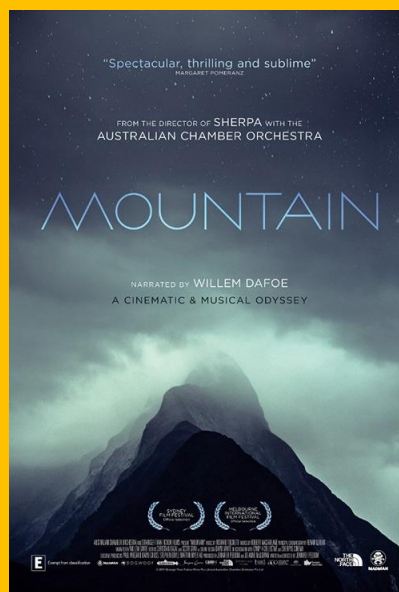
Climber Content

Is there anything you would like to see in the newsletter? Do you have a suggestion for improving the newsletter? If so, drop us a line, we're keen to hear from you. Alternatively, we love getting

submissions from members – whether they be Trip Reports, Items for Sale or rants. Just send your material to the editor by the 20th of the month preceding. Contact Kelly Cooney from emailing: Kelly@wildfiresolutions.co.nz

Monthly Meeting – Friday 25th August 8pm 2017.
NB: This will be held at the local Movie theatre Movie Max

MOVIE: 'Mountain'



Please make your own reservation and book tickets ahead (last time many missed out as did not book).

An epic cinematic and musical collaboration between Sherpa filmmaker Jennifer Peedom and the Australian Chamber Orchestra, that explores humankind's fascination with high places.

"Fellow collaborators to this unique project are British writer Robert Macfarlane (author of the award-winning Mountains of the Mind) and leading high altitude cinematographer Renan Ozturk (Sherpa, Meru). Richard Tognetti's recorded score is stunning; soaring as the camera climbs vertiginous slopes or swoops across rocky peaks. With all this earthly beauty, it's hard to believe that only three centuries ago, the idea of conquering a peak was considered crazy. Mountains were once solely places of peril, not beauty. The absorbing narration traces our modern day fascination – our irresistible and sometimes fatal attraction to the dizzying heights." (Sydney Film Festival).

Our meetings are held from February through to November in the Police Social Room, North Street, Timaru (Top floor of the Police station, access via back door adjacent to the vehicle entrance on North Street).

Come & be inspired!

Speakers

Your Committee welcomes ideas of Topics and Speakers. Please send them in ASAP to any Committee Member, we look forward to receiving them! Do not be shy to offer yourself (Contacts at bottom of Newsletter).

Wall/Crag Climbing

There are public climbing wall sessions at Ara Polytechnic, Timaru. Details as follows:

Public sessions:

Wednesdays 7pm-9pm

TG Block Gym, Theodosia Street, Timaru

Term 3

9 August, 16 August, 23 August, 30 August, 6 September

Cost per person:

\$6 youth (14yrs and under)

\$8 students (with student ID)

\$10 adults (18yrs +)

For more Information: <http://www.ara.ac.nz/services-and-support/recreation-and-sport/climbing-wall>

Death Notice

Ian Jeffery a long term member of our NZAC Section passed away on the 12th July aged 88years. His first notable climb was Mt Cook in the company of 3 Guides and it was notable as he carried a primus up for a drink on the summit! In his earlier years Unwin Lodge and the South Canterbury Section has much to thank Ian for.

For Hire

The section has ice axes, crampons, snow shovels, avalanche transceivers, snowshoes, snow stakes and now, a second Personal Locator Beacon for hire. Contact Gary Brehaut (03) 688 9399.

Keep up to date with the latest local news, photos and events by connecting with us on Facebook! www.facebook.com/groups/NZACsouthcanterbury



National News

Ski Mountaineering

Young alpinists looking to embark on a ski mountaineering expedition- apply now for the [Splitfest Backcountry Festival](http://www.splitfest.co.nz/p/ski-mountaineering-s.html?m=1) Youth Ski Mountaineering Scholarship - Sponsored by NZAC. Applications close 30 September 2017 <http://www.splitfest.co.nz/p/ski-mountaineering-s.html?m=1>

Discounts to NZAC Members

Potton and Burton have two new 10% discounts off RRP for NZAC members. Log in to view the discount code and link through to the PnB website to purchase.

Edmund Hillary A Biography by Michael Gill <https://alpineclub.org.nz/company/potton-and-burton-2-2/>

Caves: Exploring New Zealand's Subterranean Wilderness

<https://alpineclub.org.nz/company/potton-and-burton-2-2/>

NZAC have a very limited stock (5 remaining) of Caves available at only \$60 + p&p to members. Once sold, they won't be re-stocked and so only the discount will be available:

<https://alpineclub.org.nz/product/caves/>

Binoculars Found

We've had some binoculars in a black zip-up case handed in that were left at Elcho hut about a week, or so ago. Please phone/email me at margaret@alpineclub.org.nz if you think they are yours.

Upcoming Trips

Trips	When	Contact
Wall/Crag Climbing	Text 021 243 7381 if you want to climb.	Kelly Cooney
Any ideas?	...Well, let us know!	Committee

South Canterbury Section - Contacts

Chairperson

Committee/ Gear Hire

Gary Brehaut

Email: brehaut@xtra.co.nz

Phone: 688 9399 027 497 8952

Vice Chairman

Nick Wall

Email: nwall@farmside.co.nz

Phone: (03) 675 6103 027 523 9888

Secretary/Rep

Rob Moffat

Email: rcmoffat@kinect.co.nz

Phone: 688 1212 wk (03) 689 8079
027 221 0981

Treasurer

Gordon Hasell

Email: ghasell@xtra.co.nz

Phone: 686 3613 027 201 4554

Committee

Neil Harding-Roberts

Email: neilh-r@xtra.co.nz

Phone: 686 2089

Committee

Roger Brown

Email: express.sounds@xtra.co.nz

Phone: 6860977

Library

Geoff McCrostie

Phone: 686 3320 or 027 191 2322

Committee

Ian Rogers

Email: twopeaks@clear.net.nz

Phone: 614 7786

Committee

Mark Easton

Email: eastonholloway@xtra.co.nz

Phone: 684 4985

Committee/ Newsletter Editor

Kelly Cooney

Email: kelly@wildfiresolutions.co.nz

Phone: 021 243 7381 971 0126

Committee

Syd Woods

Email: syd.charl@vodafone.net.nz

Phone: (03) 693 8093 021 116 2309

Committee

John Wilson

Email: jwilson@thompsonengineering.co.nz

Mobile: 021 756 695

Unwin Lodge Bookings

Warden/Manager

Email: unwin@alpineclub.org.nz

Phone: 03 4351100