

The Otago Climber

February 2019



Spent your summer just hanging about? Bring a few pics along to our first Section Night for 2019 and share your adventures. Details page 2.

The Otago Climber

*The monthly newsletter of the
Otago Section of the New Zealand Alpine Club*

February 2019

Club Night

Wednesday, 13 February 2019

University of Otago Staff Club, 7.30pm



What have you done in the hills so far this summer? Our first Section Night for 2019 will be the traditional “show and tell” and we’d love to see you along. Just pop a few pics of your summer adventures onto a USB memory stick and come along to share your experiences with the rest of us. This is a great opportunity to talk about what you’ve been doing, without the stress and effort of preparing a full section night presentation. And did we mention – everyone who contributes gets their first refreshment paid for by the club. If you haven’t done anything so far this summer – come along anyway for some inspiration, useful beta on the trips around and of course the good company.

Trips and events calendar

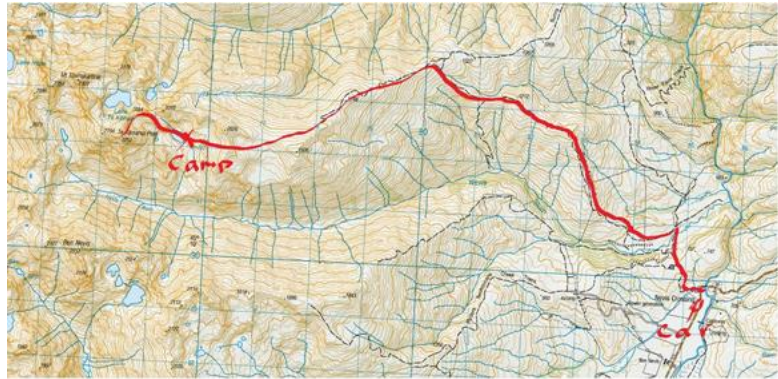
Wednesday, 13 February 2019. Our first Section Club night for 2019 will be the traditional "Show and Tell". This is your opportunity to bring a few pics over your adventures from the holiday period.

Te Karearea Peak, Feb 15-16th

This trip is to the new Te Karearea Peak in the Hector Mountains. It should be an easy scramble, but a good level of fitness required. We plan to climb Te Karearea from the Nevis Valley.

We will drive up on Friday night and either camp at Nevis Crossing or stay at Bannockburn. Saturday we will walk to Camp site and on Sunday

complete the climb and walk out and drive back to Dunedin. To go on the Trip contact the trip organiser Keith Moffat by emailing otago.climber@gmail.com ASAP!.



Introduction to Rock Climbing. 24 February Once again, the Section has asked local climbing guru Tim Bartholomew to run an introduction to rock climbing for those who haven't climbed before and who would like to come along to Tuesday night climbing. The one-day course will cost \$30 – everything included. If you, or someone you know, are keen – email Otago.climber@gmail.com and we'll send you the details and registration form.

Introduction to Trad Climbing. 16 & 17 March. For those with a year or two of climbing experience, the Section has also asked Tim to run a two day Trad Climbing course. You will need climbing experience to do the course – but once again, everything will be provided to get you trad climbing on your own gear – or to refresh you if you haven't placed gear for a while. The course will cost \$70 for the two days and numbers will be limited. Email Otago.climber@gmail.com to book a place.

New Section Website for easy trip booking

Sign-up now to get fast and simple trip information, booking and info.

Just a reminder to section members that the Otago section has introduced a new trip planning system at our section website www.osonzac.org.nz. On the website, you can organize and join section events and events organized privately by members, and you can subscribe to email notifications when certain types of events (rock climbing, mountaineering, etc.) are posted to the site. Our aim with this site is to increase the number of trips organized by the section and improve our members' ability to connect with each other. To sign up for an account, please visit <https://www.osonzac.org.nz/SigningUp.php>. Non-members are also welcome.

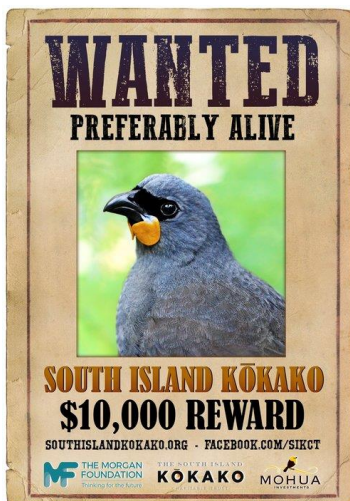
For those who have already signed up: please check your email preferences. The default setting is that you will receive **no** notifications. A number of people have requested accounts but not changed their email settings from the default.

Greenland Crossing on film

In 2018 Antarctic Heritage Trust took four young explorers 560km across the Greenland ice cap, in an epic expedition honouring Fridtjof Nansen's first crossing 130 years ago. The explorers included a record-setting trailblazer, a New Zealand endurance athlete, a respected international videographer and an intrepid Australian adventurer. The team took 28 days to ski across the ice cap dragging sleds behind them. They faced unprecedented levels of snow, Arctic hurricanes and sickness, in a season where only a handful of teams made it across the ice successfully. *In Nansen's Footsteps* shares this journey as well some incredible drone footage which captures the beauty of an area few viewers are likely to travel to. Shot and directed by Inspiring Explorer Keith Parsons, the Trust worked closely with Belmont Productions to produce the film. Read the full story and watch the film online on the Trust's website at www.nzah.org or you can go to the film directly [here](#).



New South Island Kōkako Encounter Map



The South Island Kokako Charitable Trust are delighted to launch this superb new interactive map resource to help plan your next South and Stewart Island adventure with the search for the South Island kōkako in mind.

Click on [this link to go to the new map](#) and discover the most recent and best encounter reports. Click on a data point to read more about it. Additional layers available are predator control areas, borrowed from Predator Free NZ, and walking and biking tracks from LINZ data. Six base-maps are also available including topographic and aerial imagery.

To read more on how you can help in the search, please see the Trust's website: <http://www.southislandkokako.org/the-search/>

New NZAC Stock Items

This arrived in our stock just prior to Christmas, so members may not yet be aware we are selling copies online of 'Scenic Playground' by Peter Alsop, Dave Bamford and Lee Davidson.

<https://alpineclub.org.nz/product/scenic-playground/> In addition, due to demand, we have obtained more stock of 'To the Mountains' by Laurence Fearnley and Paul Hersey

<https://alpineclub.org.nz/product/to-the-mountains/> For your member discounted purchase price, please log in before adding to your shopping cart.

Process for PLB hire

The Otago Section has two PLBs for Section members to use when heading outdoors. Rental is free for NZAC members but \$5 per day for non-members. So that we can track the rentals, and respond if something goes wrong, the Section has created an online booking form at <https://goo.gl/forms/TQJrhMZxacHf30qP2>

When the form is completed online the results are automatically loaded into a spreadsheet in the Section's Google Drive, so we have a record of your rental and planned trip details. All that you do then is to arrange to collect a unit from either Keith Moffat Moffat.k172@gmail.com or Riley Smith rileychallis@gmail.com . Further contact details in the newsletter.

Section Safety Gear Rental

Our eight sets of avalanche equipment and eight sets of snowshoes are now available for rent from the new Hunting and Fishing shop, now at 141 Crawford Street, in Dunedin. The new shop is open seven days till 5.30 weekdays, 5pm Saturday and 4pm Sunday. More details at www.huntingandfishing.co.nz .

The rental costs are \$5 per day for an avalanche set of transceiver, probe and shovel and \$5 per day for snowshoes for all Alpine Club members. You MUST show your current membership card to receive that rate. Not a member, or don't have your card? Then the fee is \$10 per day and you will be required to pay a \$20 deposit.



Members are welcome to collect gear on Friday and return Monday and two day's rental will apply. If you wish to make other arrangements, please contact Keith or any of the committee and we will sort things out BEFORE you go into the shop. If you have any issues with the gear or rentals, please don't hassle the staff at Hunting and Fishing as they are doing us a huge favour by running the rental scheme for us

2018-19 Otago Section Committee			
Chair	Riley Smith	027 222 8731	rileychallis@gmail.com
Treasurer, Equipment	Keith Moffat	027 6644037	Moffat.k172@gmail.com
Secretary, Newsletter	Lindsay Smith	027 404 8911	lindsay@plumtree.net.nz
Trips, Banff Film Festival	Danilo Hegg		danilo_hegg@hotmail.com
Instruction	Heather Rhodes	027 258 6534	heathermayrhodes@gmail.com
Rock climbing	Eve O'Brien	0276423211	eve.j.obrien@gmail.com
Development	Ryan Thomas	0273115723	Ryan.j.thomas1@gmail.com
New Committee member	Jono Squire		

Section Contact information

Otago Section of the New Zealand Alpine Club
c/o 172 Gladstone Rd, Dalmore, Dunedin 9016

Email: otago.climber@gmail.com

Web: <https://alpineclub.org.nz/region/otago/>
Facebook: <https://www.facebook.com/osonzac>